

# Welcome Guide

## LC130 Flashlight

### Safety Instructions



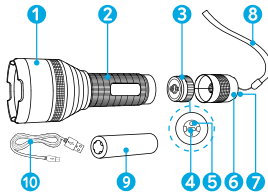
**Caution:** Use of the flashlight for an extended period of time may cause overheating. If this occurs, turn the flashlight off and allow it to cool down before further use.

- The light source of this flashlight is not replaceable; when the light source reaches the end of its life, the whole flashlight needs to be replaced.
- Avoid hitting or dropping the flashlight.
- Do not stare directly into the beam or shine it directly into anyone's face. Doing so for more than a few seconds could cause retinal damage.
- Do not allow children to use the flashlight unless under the supervision of an adult.
- Only recharge the battery in a dry place indoors.
- Use only the provided battery, or one of the same type with circuit protection from a reputable manufacturer.
- 26650 Li-ion batteries are powerful cells, so treat with caution. Using high-quality batteries with circuit protection reduces the potential risk of combustion or explosion.
- Do not attempt to recharge non-rechargeable batteries. This can cause them to overheat or leak.
- Do not use metal objects to connect the terminals of the battery.
- Do not use the battery near fire or in places with high temperatures, or apply excessive force as that can cause the battery to explode.
- Check the battery regularly for any signs of damage or leakage. Do not charge a damaged or leaking battery.

►1

- The battery must be removed from the flashlight before the flashlight is disposed of.
- An exhausted or leaking battery should be removed from the flashlight and disposed of safely according to local environmental regulations.
- When not using the flashlight for long periods of time, please remove the battery and store in a cool, dry place.

### At a Glance



- |                            |                               |
|----------------------------|-------------------------------|
| 1. Flashlight head         | 6. Tail cap                   |
| 2. Battery compartment     | 7. On / Off button            |
| 3. Battery compartment cap | 8. Lanyard                    |
| 4. USB charging port       | 9. 26650 rechargeable battery |
| 5. LED charging indicator  | 10. Micro USB charging cable  |

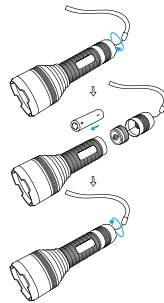
►2

### Installation



Only use a 26650 Li-ion battery.

- Unscrew the tail cap and battery cap.
- Install 1 × 26650 Li-ion battery (included).
- Securely replace the battery cap and tail cap.



Follow the same method to remove the battery.

►3

### Operation

<b>Momentary-On</b>		Press halfway (and hold) to activate the light momentarily.
<b>Continuous</b>		Press all the way to completely turn on the flashlight. Press again to turn it off.
<b>Lighting Modes</b> High / Medium / Low Strobe / SOS		To switch between the 5 lighting modes: <b>Momentary-On:</b> release and press halfway again within 2 sec. <b>Continuous:</b> turn off and on again within 2 sec.

### Memory Function

The flashlight memorizes the last lighting mode used. When the flashlight is turned on next time, it will activate the last lighting mode you selected.

►4

For FAQs and more information, please visit:



[anker.com/support](https://anker.com/support)



@Anker  
@Anker Japan  
@Anker Deutschland



@AnkerOfficial  
@Anker\_JP



@Anker

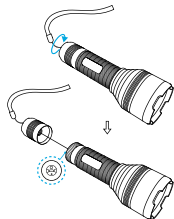


Product Number T1422  
SM-A427-V02

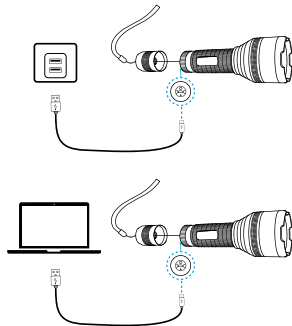
## Charging

The flashlight will blink 3 times when the battery is nearly depleted and needs to be charged.

- Unscrew the tail cap.

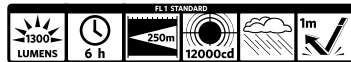


- Connect the USB cable.



Steady red	Charging
Steady green	Fully charged

## Specifications



Battery Type	26650 Li-ion battery
Charging Time	8 hours
IP Rating	IP67
Dimensions	180 × 60 × 60 mm / 7.1 × 2.4 × 2.4 in
Weight	380 g / 13.4 oz (excluding battery)
Operating Temperature	0°C - 40°C



This symbol means the product must not be discarded as household waste, and should be delivered to an appropriate collection facility for recycling. Proper disposal and recycling helps protect natural resources, human health and the environment. For more information on disposal and recycling of this product, contact your local municipality, disposal service, or the shop where you bought this product.

### FCC Statement

This device complies with Part 15 of the FCC Rules. Operation is subject to the following two conditions: (1) This device may not cause harmful interference, and (2) this device must accept any interference received, including interference that may cause undesired operation.

**Warning:** Changes or modifications not expressly approved by the party responsible for compliance could void the user's authority to operate the equipment.

**Note:** This equipment has been tested and found to comply with the limits for a Class B digital device, pursuant to Part 15 of the FCC Rules. These limits are designed to provide reasonable protection against harmful interference in a residential installation.

This equipment generates, uses and can radiate radio frequency energy and, if not installed and used in accordance with the instructions, may cause harmful interference to radio communications. However, there is no guarantee that interference will not occur in a particular installation. If this equipment does cause harmful interference to radio or television reception, which can be determined by turning the equipment off and on, the user is encouraged to try to correct the interference by one or more of the following measures: (1) Reorient or relocate the receiving antenna. (2) Increase the separation between the equipment and receiver. (3) Connect the equipment into an outlet on a circuit different from that to which the receiver is connected. (4) Consult the dealer or an experienced radio / TV technician for help.



[support@anker.com](mailto:support@anker.com)



1-800-988-7973 | Mon-Fri 9:00-17:00 PST (US)  
03-4455-7823 | Mon-Fri 9:00-17:00 (日本)  
069-9579-7960 | Mon-Fri 6:00-11:00 (DE)  
01604-936200 | Mon-Fri 6:00-11:00 (UK)  
400-0550-036 | Mon-Fri 9:00-17:30 (中国)