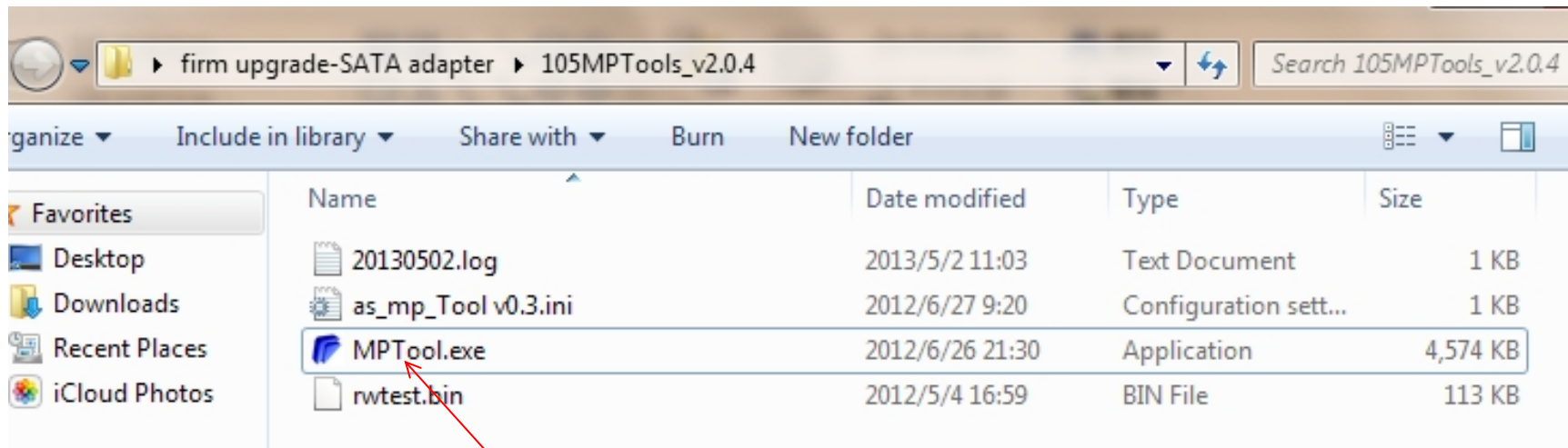


ANKER SATA ADAPTER 68UPSATAA-02BU FIRMWARE UPGRADE INSTRUCTION

- This introduction helps you upgrade firmware to **120919_11_00_00**, which fixed blu-ray compatible issue.
- First of all, please connect the SATA adapter to your computer and power it on.



Click to open firmware upgrade software

1. Click to open

The screenshot shows the Asmedia MPTool Ver 2.0.4 interface. At the top, a toolbar contains icons for search, edit, a key (highlighted with a red circle and an arrow from the text '1. Click to open'), and settings. The main window is divided into several sections: 'Device Configuration' with fields for Format (TYPE1), Vendor ID (174C), Product ID (55AA), Device Revision (0100), Serial Number (123456789012), S/N Increase (DISABLE), Manufacturer String (asmedia), Product String (ASMT1051), and Idle Timer (Never); 'Device Function' with radio buttons for MP Auto Mode, Update Config, Update FW, Reload FW, Partition / Format, W/R Test, and Preload Files, along with a 'Type' dropdown set to FAT32 and a 'Drive Label' field set to NEW DISK; 'FW Browser' showing a file path D:\110726_00_00_00.bin; and a table with columns for Port#, Status, VID, PID, Serial Number, and FW. A 'Login' dialog box is open in the center, with a 'Password' field containing seven dots (highlighted with a red circle and an arrow from the text 'Type the password "asmedia"') and 'Ok' and 'Cancel' buttons. An arrow from the text 'Click "OK"' points to the 'Ok' button. At the bottom, there is a 'Progress Bar' showing 0% progress and a table with columns for Pass, Fail, and Total, all showing 0.

Device Configuration

Format: TYPE1 Vendor ID: 174C Product ID: 55AA Device Revision: 0100

Serial Number: 123456789012 S/N Increase: DISABLE

Manufacturer String: asmedia

Product String: ASMT1051

Idle Timer: Never

Device Function

MP Auto Mode Update Config

Update FW Reload FW

Partition / Format Type: FAT32

Drive Label: NEW DISK

W/R Test Preload Files

FW Browser

D:\110726_00_00_00.bin

Port#	Status	VID	PID	Serial Number	FW
0					
1					
2					
3					
4					
5					
6					
7					
8					
9					
10					

FW Update ReLink Partiti... Format R/W Test

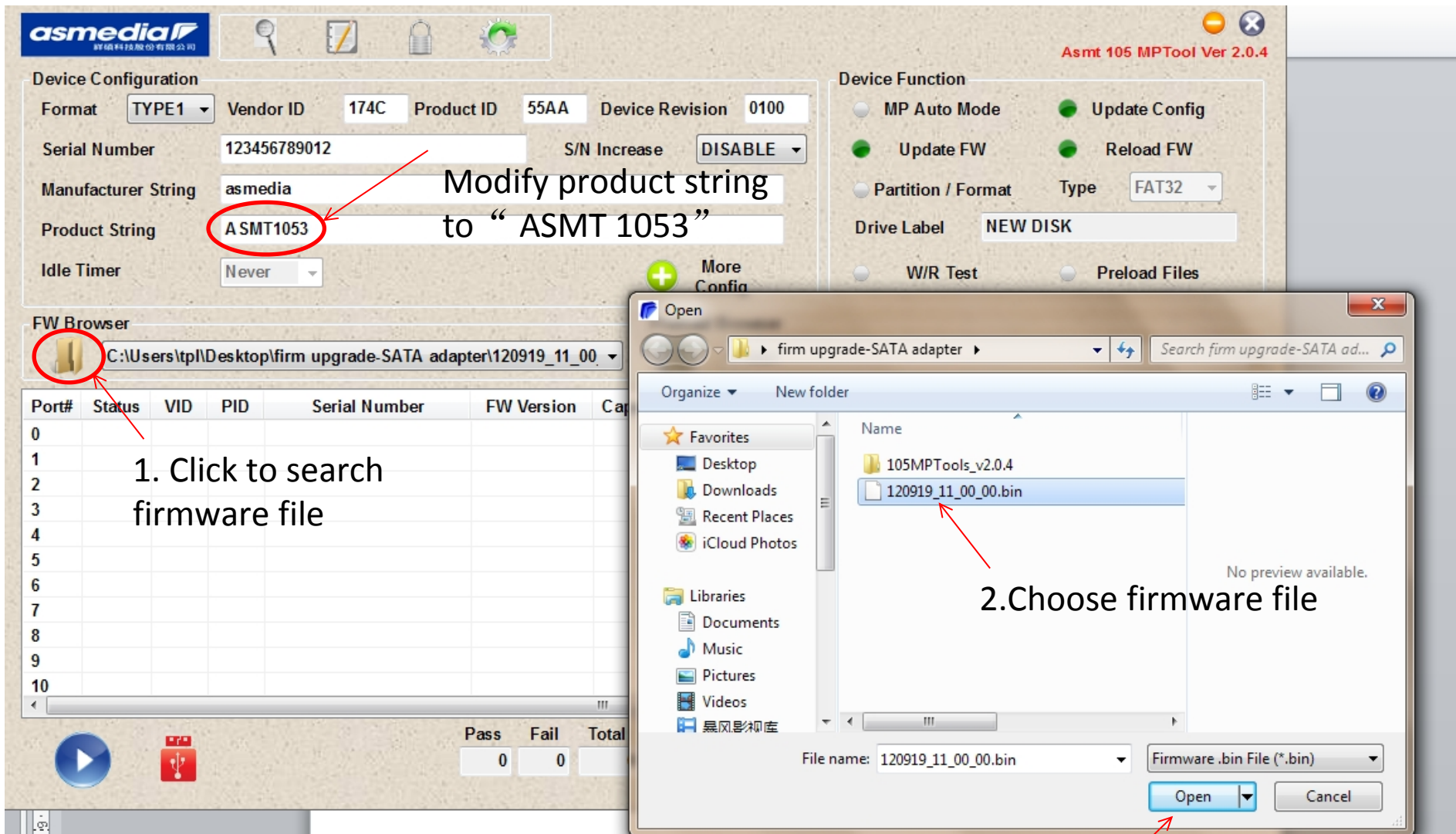
Pass Fail Total

0 0 0

Progress Bar Progress 0%

Type the password "asmedia"

Click "OK"

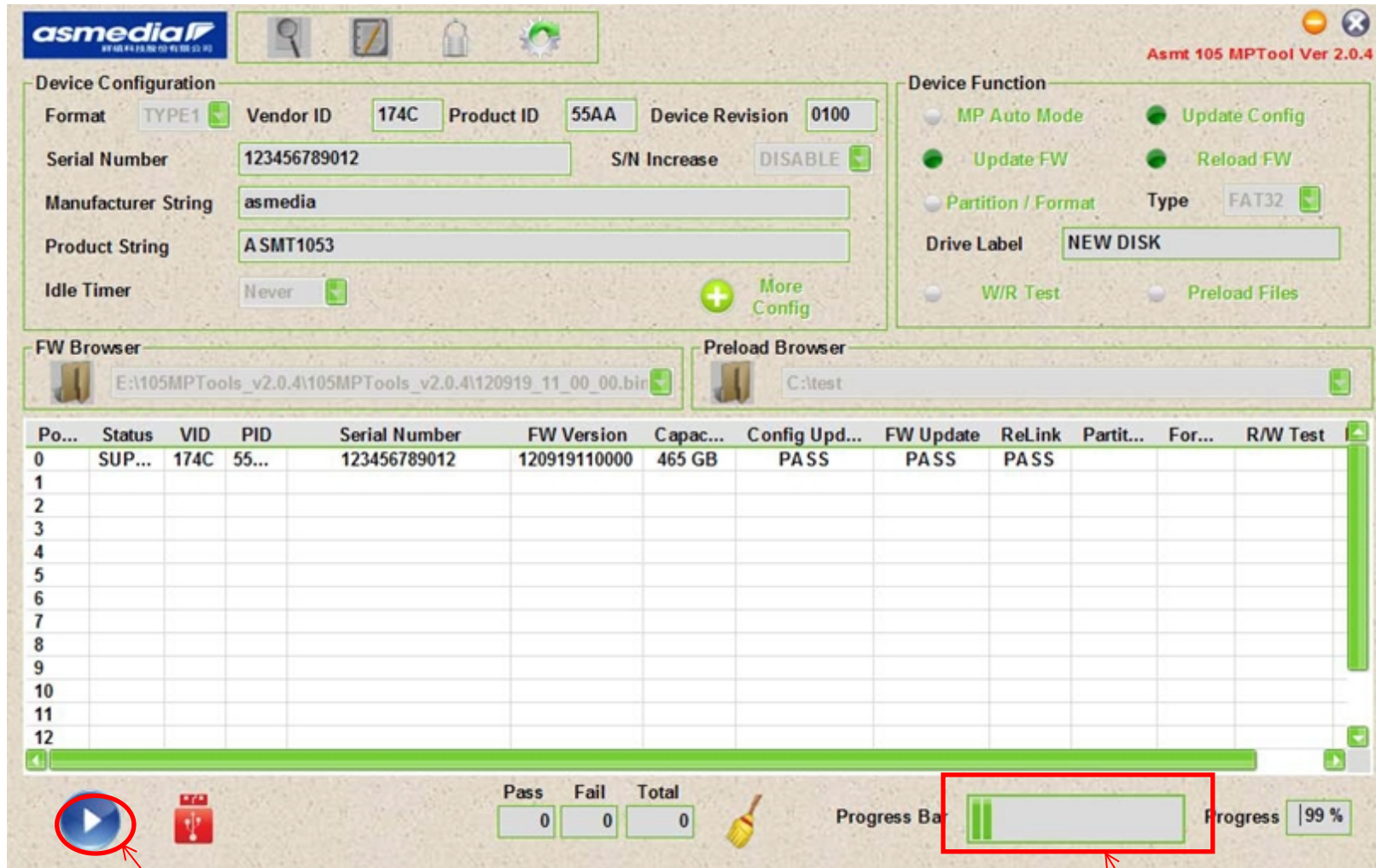


Modify product string to "ASMT 1053"

1. Click to search firmware file

2. Choose firmware file

3. Click to open



Click to start burning

it's burning

File Explorer window showing the Asmt 105 MPTool Ver 2.0.4 interface. The interface includes a menu bar, a toolbar, and several configuration panels.

Device Configuration:

- Format: TYPE1
- Vendor ID: 174C
- Product ID: 55AA
- Device Revision: 0100
- Serial Number: 123456789012
- S/N Increase: DISABLE
- Manufacturer String: asmedia
- Product String: A SMT1053
- Idle Timer: Never
- More Config: +

Device Function:

- MP Auto Mode:
- Update Config:
- Update FW:
- Reload FW:
- Partition / Format: Type: FAT32
- Drive Label: NEW DISK
- W/R Test:
- Preload Files:

FW Browser: E:\105MPTools_v2.0.4\105MPTools_v2.0.4\120919_11_00_00.bin

Preload Browser: C:\test

Po...	Status	VID	PID	Serial Number	FW Version	Capac...	Config Und...	FW Update	Rel ink	Partit...	For...	R/W Test
0	SUP...	174C	55...	123456789012	120919110000	465 GB	PASS	PASS	PASS			
1												
2												
3												
4												
5												
6												
7												
8												
9												
10												
11												
12												

Progress Bar: Pass: 1, Fail: 0, Total: 1. Progress: 100%

Burning success, "PASS" showed

Burning finished